

for sale by owner

[cars+trucks](#)

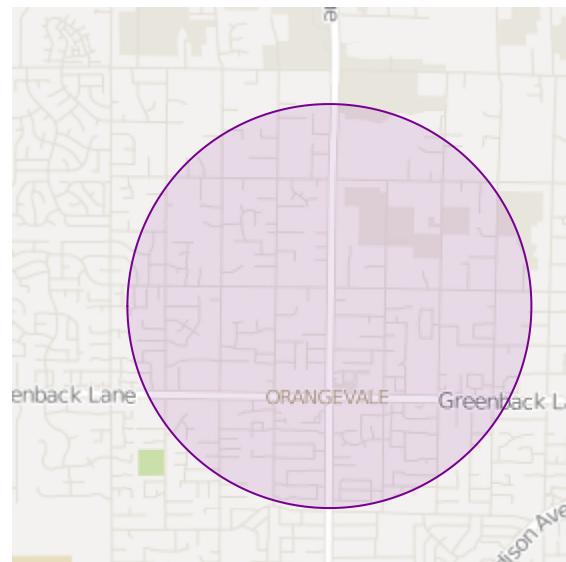
favorite hide flag share

Posted a day ago on: 2024-01-13 10:01

Contact Information:

1968 Ford Mustang California Special! - \$34,500 (Orangevale)

image 1 of 24



1968 ford mustang

cylinders: **8 cylinders**

fuel: **gas**

odometer: **1111**

title status: **clean**

transmission: **automatic**

1968 Ford Mustang California Special, Original San Jose CA Car, Black Plate, Early Production With Marchal Fog Lights, 289 2V, Automatic, Power Steering, Disc Brakes, Factory Air Conditioning, Upgraded Stereo System, Grab A Trak Suspension Including New Springs Front And Rear, Shocks And A Bigger Front Sway Bar, Factory Lime Gold Color, Black Interior In Great Shape, All Original Sheet Metal Including Floor Pans, Very Solid Original Car, Older Restoration With Some Paint Flaws On Roof And Decklid, New Tires, Runs And Drives Excellent, Very Rare To Find In This Condition, See Marti Report In Photos For All The Options, Please Call For More info Or To Come Take A Look!!

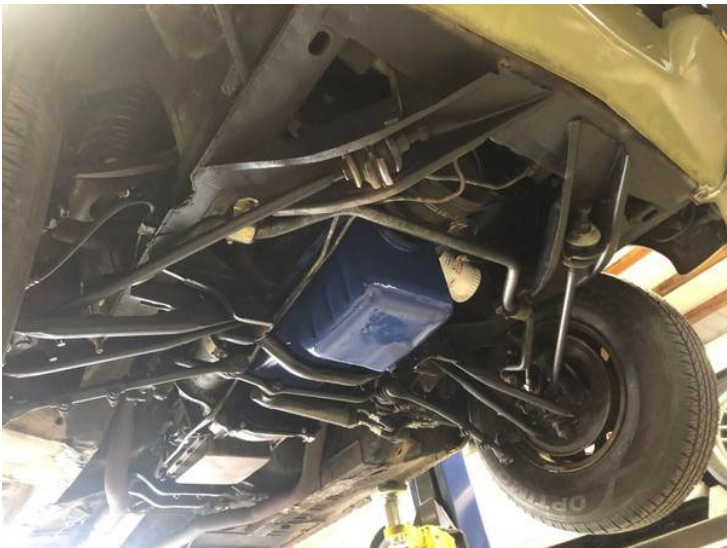
Brian
(916)2Four7-5Two87
\$34,500

QR Code Link to This Post











“EXTERIOR QUALITY, INTERIOR PRICE”

Marti Auto Works
www.martiauto.com
13230 W. Butler Drive
El Mirage, AZ 85335
Phone (623) 835-2558
Fax (623) 835-2579

STANDARD MARTI REPORT

Proud to display this symbol
Copyright Kevin Marti 2024

DOOR DATA PLATE INFORMATION

Serial Number **8R01C142681**

S 1968
R Built at San Jose
D1 Mustang 2-Door Hardtop
C 289-2V V-8 Engine
142681 Serial Number of this Ford scheduled for production at San Jose

65A Mustang 2-Door Hardtop
I Line Gold Paint, Ford #2041-A
2A Black Vinyl Standard Bucket Seats
15B Scheduled for build February 15, 1968
71 Los Angeles DSO (District Sales Office)
2 2.79 Conventional Rear Axle
W C-4 Select Shift Automatic Transmission

DEALER #: 711442

Your vehicle was equipped with the following features:

- California Special
- F70X14 Wide Oval White Sidewall Nylon Tires
- Power Steering
- Air Conditioner - SelectAire
- AM Radio
- Tinted Glass
- Deluxe Seat Belts
- Wheel Covers

Your vehicle was actually produced on February 19, 1968 – four days behind schedule.

Kevin Marti
Kevin Marti